

BSRFC



OFFICIAL MATCH PROGRAMME
BISHOP'S STORTFORD RFC vs TAUNTON



RUNNING LOOSE

Oli Jones breaks down the side of the Barnstaple pack

**INTERVIEW WITH
PRESIDENT OF THE RFU**

**LIFE AND TIMES
WITH BSRFC COLTS**

**SCRUMMAGING
TOUCHLINE OPTION**

Photo by Andy Long - Longmores Solicitors

£10.00 (£5.00 FOR BSRFC MEMBERS)





Helpfully Productive

Bringing together print technology,
digital wizardry and marketing mastery
to help you work wonders with your
communications.

Talk to us about why it really is
better printed.

[#makingmagichappen](#)

01279 757 333

proco.com

PRESIDENT'S WELCOME



Welcome once again everyone to Silver Leys particularly the Players, Officials and supporters of Taunton Rugby Club along with everyone associated with our Man of the Match sponsors Bacchus.

We are also especially honoured to be joined today by Peter Baines, the President of the Rugby Football Union. Thank You Peter for making time in your incredibly busy schedule to visit us here at Stortford. We hope you enjoy what promises to be a highly competitive game of Level 4 rugby.

In my programme piece for the Clifton game I mentioned that we needed a win to get back on track and as we know the team duly obliged. Two more wins on the road, the first of which came on a miserable day in Barnstaple and then again, in more pleasant circumstances, last Saturday at Worthing, mean that we enter today's encounter in much better heart.

Today's opponents, Taunton Titans have in contrast hit a bit of a sticky patch with one win and two losses in their past three games, including a very surprising home loss to Clifton last weekend. However I'm not sure we should take too much solace from those bald facts. The Titans always seem to perform well here. In last season's corresponding fixture they triumphed 26-22 and with it all but put paid to our promotion aspirations for another year. My guess is that it's going to be another exhilarating nail biter. Make sure the AED is fully charged Lesley!

I'm pleased to report that last Saturday we once again fielded five full senior teams. In fact the Abbots or 5th XV had no fewer than 12 reserves! So my dream of us having six senior sides before too long really isn't that unrealistic.

There is also positive news to relate in respect of Women's rugby at Stortford. As a Community club one of our main objectives is to provide rugby for all. So the absence of Women's rugby has been a significant blot on our otherwise impressive CV. The good news is that next Tuesday evening (1st) we are hosting for the first time a 'Pitch up & Play' session for any adult women who want to try the game. We are hugely indebted to Carly Poyser, U12 Mum & Owner of 'Little Scrummers', for driving this project on our behalf. Carly's tells me that she is busy brushing up on the laws of the game with the help of her son Oscar. So if you know any women interested in seeing what our sport has to offer them, then please point them, in Carly's direction or tell them to just turn up here on Tuesday evening and have a go!

And finally as you will read elsewhere in this edition of the programme our team of Mini festival organisers once again delivered a joyous day of rugby for nearly 700 young players from across the area. Congratulations & Thank you to Richard Ward, & his U9's who were ably assisted by seasoned stalwarts Al Jones, Nick & Lesley Cox

Have a great day
COYB!

Perry Oliver
President

BMW



Elms
Stansted

The Ultimate
Driving Machine



ELMS STANSTED, YOUR LOCAL BMW RETAILER.

SPONSORS OF BISHOP'S STORTFORD RFC.

As an authorised BMW Retailer, Elms Stansted offers the highest levels of service and expertise to the local area. Whether it's a new or BMW Approved Used Car, or even a service, our commitment is to maintain the highest of dealership standards.

**For more information or to arrange a test drive*, call us on
01279 755906 or visit www.elmsstanstedbmw.co.uk**

ELMS STANSTED

Stansted Road, Bishop's Stortford,
Hertfordshire CM23 2BT

01279 755906



www.elmsstanstedbmw.co.uk

*Test drive subject to applicant status and availability.



D.O.R SAYS

Andy Long pays tribute to former Munster team-mate Anthony Foley

TRAGIC: Munster head coach Anthony Foley died last week

An emotional Andy Long has paid tribute to Munster head coach Anthony Foley, who died aged 42 after suffering heart problems in his Paris hotel room shortly before his team's European Champions Cup match against Racing 92.

Long, director of rugby at Bishop's Stortford, played alongside Foley when he joined Munster in 2003.

"I was devastated when I heard the news of his death," said Long. "I played with him when I was at Munster in 2003. I spent some time with him before he left for the World Cup, and then saw him on a number of other occasions with other teams.

"You're never going to meet a nicer guy. He was so humble and honest. He was someone you'd always want to go into battle with. "He was always smiling and always made me feel very welcome. I was really sad to hear the news, and it puts everything into perspective really.

"He'll be a real loss, and you only have to see how the Munster supporters reacted [when news of his death broke last Sunday] in Paris and how it rocked their world.

"It's just so young to lose someone like that." Long said that Foley had welcomed him with open arms in his time at Munster.

"When I turned up at Munster in 2003 in training, as a senior player he made us all welcome, and generally was a top bloke.

"There was a very professional group of players in that Munster era – leading to their winning the Heineken Cup.

"In 2003 when I was there, that was when you had the likes of Paul O'Connell, Dominic O'Callaghan and Keith Wood – as well as other top players like that – who were coming through.

"When I look back on my career at that time, I certainly look back with fond memories.

"It has shocked the rugby world and community, but we look after each other. It was a sad day."

Bishop's Stortford side host Taunton to-day. "Last Saturdays win at Worthing on the back of two big wins, against Clifton and Barnstaple was vital in the long term scheme especially as we had never beaten them before on their ground. But there are no easy games in this league.

"We want to put pressure on the sides above us and we know we've got to keep performing. – we've just got to keep picking up the points" said Long.



ELMS STANSTED

PROUDLY SUPPORT BISHOP'S STORTFORD RFC.

As an authorised MINI Dealer, Elms Stansted offers the highest levels of service and expertise to the local area. Whether it's a new or Cherished MINI, or even a service, our commitment is to maintain the highest of dealership standards.

For more information or to arrange a test drive*, call us on 01279 216770 or visit www.elmsstanstedmini.co.uk

ELMS STANSTED

Stansted Road, Bishop's Stortford
Hertfordshire CM23 2BT
01279 216770 www.elmsstanstedmini.co.uk

*Test drive subject to applicant status and availability.



NEWBIES – PRODIGALS & ADVANCERS

Will Simmonds – Incomer

As a Rugby Club we do tend to emphasise how home grown talent makes up the majority of the team but the arrival of new members arriving at Bishop’s Stortford Rugby Club has always been encouraged for whatever talents they can bring.

One such NEWBIE this season is Will Simmonds. Will has joined Bishop’s Stortford and has been playing at full back and crowned his arrival with a hatrick of tries against Worthing last Saturday.

His development whilst not “Stortford influenced” follows the Stortford pattern;

Tag/Mini Rugby at Amersham/Chiltern – School Rugby for Aylesbury Grammar Representative honours for both Buckinghamshire and (following move) East Midlands Under 18’s. Will was in the Bedford Blues Academy but then went off to Manchester University to study History & Economics where he joined Burnage Rugby Club. Burnage play in North 1 West.

Will tells me that on moving back South he looked carefully at Clubs in the area, checking their reputation at a level where he would find a challenge. It is perhaps reassuring but not wholly surprising to hear that BSRFC came through his examination with flying colours.

Will signed up after training had started and found Gillies fitness programme very hard but well organised. The setting of initial test scores have been checked and improved upon. His sporting heroe is Dan Carter.

Working in Financial Services he now j ust needs to keep accumulating his Try capital and the Interest will follow.

10 Questions in 30 seconds

- | | | | |
|-----------------|-------------------|----|--------------------|
| On holiday | Sightseeing | or | Laze by the Pool |
| Prefer to watch | American Football | or | Assoc. Football |
| | Rolling Maul Try | or | Three Quarter Move |
| | Show Music | or | Opera |
| | Jennifer Aniston | or | Emma Watson |
| | Chinese Food | or | Italian Food |
| | Lager | or | Cider |
| | Beyonce | or | Adele |
| | Theatre | or | Cinema |
| Video Games | CarRace/Chase | or | Battle |

THE PLAYERS



TOM COLEMAN
SPONSORED BY
Tees Law
www.teeslaw.co.uk




MARK MCCRAITH
SPONSORED BY
Radleys
www.radleys.com



ADAM EAGLE
SPONSORED BY
CSL Stansted
01279 879352



ALEX PATTON
SPONSORED BY
Walden Capital
www.waldencapital.co.uk



ARRAN MAHONEY
SPONSORED BY
Mahoney Audio
mahoneyaudio@gmail.com



BEN LAW
SPONSORED BY
Zelley
www.zelleyonline.com





BRAD ABRAHAM

SPONSORED BY

Bit Solutions
www.bitsolutions.net



CHRIS ALDAM

SPONSORED BY

Greys of Ely
www.greysofely.co.uk



CONOR MAHONEY

SPONSORED BY

Mahoney Audio
mahoneyaudio@gmail.com



DAN ELSOM

SPONSORED BY

Westbury Garden Rooms Ltd
www.westburygardenrooms.com



DAVE ALDAM

SPONSORED BY

Evocative Travel
www.evocativetavel.co.uk



DECLAN CAULFIELD

SPONSORED BY

T Tuscany
www.to-tuscany.com



HARRY MARNIER

AVAILABLE FOR SPONSORSHIP



HUGH MICHELL

AVAILABLE FOR SPONSORSHIP



JACOB TURNER

AVAILABLE FOR SPONSORSHIP



JACK SCANTLEBURY

SPONSORED BY

NFU Mutual
www.nfumutual.co.uk



JAMES APPERLEY

SPONSORED BY

Japanese Knotweed
knotweedmanagement.co.uk



JAMES ORBART

SPONSORED BY

DRS LLP
www.drslip.com



THE PLAYERS



JAMIE CAMPBELL

SPONSORED BY
MCMillans Engineering Ltd
mcmillansengineering.co.uk



JAMIE GAGE

SPONSORED BY
PHR



JIMMY REA

SPONSORED BY
Cammashall Farm
www.cammashall.co.uk



JOE CLARKE

SPONSORED BY
Nockolds Solicitors
www.nockolds.co.uk



JOE TRACY

SPONSORED BY
Red Pixie
www.redpixie.com



JON GEORGE

SPONSORED BY
Lunch Club



JOHNNY NEVILLE

SPONSORED BY
Longmores
longmores-solicitors.co.uk



JOSH WINTER

SPONSORED BY
Seneca Reid
www.senecareid.co.uk



LUKE WEBBER

SPONSORED BY
GC Physiotherapy Sports
& Injuries Clinic
www.gcphysiotherapy.co.uk



MARCUS BROWN

SPONSORED BY
Mitre Carpentry &
ADA Joinery Design
www.adsjoinerydesign.com



MARCUS CATTELL

SPONSORED BY
Daisy Dees Limited
daisydees23@hotmail.com



MATT TOMLINSON

SPONSORED BY
Rickard Luckin
rickardluckin.co.uk





MIKE GALLAGHER
SPONSORED BY
 R.W Marsh
 (Tim 07860 946032)
 R.W.Marsh@hotmail.co.uk



NICK HANKIN
SPONSORED BY
 Julie Wright -
 Physio & Sports Clinic
 physio-and-sports-injury-clinic.co.uk



OLI JONES
AVAILABLE FOR
SPONSORSHIP



PIER DOTTA
SPONSORED BY
 Material Handling Limited
 materialhandlingtd.co.uk



RORY BANKS
SPONSORED BY
 The Star in Standon
 thestarstandon@btconnect.com



RORY YOUNG
SPONSORED BY
 Midas Underwriting Limited
 www.midasuw.com/



ROSS BIRD
SPONSORED BY
 BEW Electrical distributors Ltd
 www.bewdirect.co.uk



RYAN HUTLER
AVAILABLE FOR
SPONSORSHIP



SAM COLEMAN
SPONSORED BY
 Mantle Business Centres
 mantlebusinesscentres.co.uk



SAM WHIFFEN
SPONSORED BY
 MKI scaffolding
 www.mki1scaffolding.co.uk



SAM WINTER
SPONSORED BY
 Pestell and Co
 www.pestell.co.uk



SEAN EDWARDS
SPONSORED BY
 The Brewery Tap
 brewerytapfp.co.uk



THE PLAYERS



SEB BROWNHILL

**AVAILABLE FOR
SPONSORSHIP**



SIMON WASLEY

SPONSORED BY
Associated Beverages
associatedbeverages.co.uk



STEVE BALL

SPONSORED BY
Croucher Needham
www.cnmadvisory.com



STEVE HEARN

**AVAILABLE FOR
SPONSORSHIP**



TOMMY CATTELL
SPONSORED BY

Pro84 Construction LTD
[facebook.com/
pro84construction](https://facebook.com/pro84construction)



TOM BANKS

SPONSORED BY
Russell Partnership
www.russellpp.co.uk



TOM MCCRONE

SPONSORED BY
R W Pearman & Son
Jeffrey.pearman@farmline.com



WILL MOORE

**AVAILABLE FOR
SPONSORSHIP**



WILL SIMMONDS

SPONSORED BY
CM23 Scaffolding
cm23scaffolding@gmail.com

CM23 SCAFFOLDING

All Scaffolding Works Undertaken

INTERESTED?

IF YOU ARE INTERESTED IN
SPONSORING ONE OF THE
AVAILABLE PLAYERS THIS
SEASON PLEASE CONTACT:

Julie North
julienorth1@gmail.com





WESTBURY

GARDEN ROOMS

01245 326500
westburygardenrooms.com

“IT’S A TOUGH JOB – BUT SOMEONE HAS TO DO IT ”



The President of the RFU – Who he is and What he does
Peter Baines, RFU Senior Vice President, became the President of the RFU from 1 August 2016 taking over from Jason Leonard. During his time in office, one of Leonard’s key priorities was developing the legacy of the Rugby World Cup 2015. The Rugby World Cup legacy programme included 400 more secondary state schools taking up rugby via CBRE All Schools, one million people engaged in the sport through Festival of Rugby events and over 500 club facilities improved.

Follow that ! Did Jason Leonard have tongue in cheek when he said “I would like to wish Peter all the best for his term as RFU President.” Diplomat Baines replied “Jason Leonard has been, and will continue to be, a brilliant ambassador for the game, and on behalf of the Union, I would like to thank him for all that he has done for the sport,”

Educated at Wells Cathedral School and St John’s College, Cambridge. Peter played at Full Back which was his normal playing position but he did play the odd game at Scrum Half. Initially playing for EAC (English Apparatus Company) based in St Albans. He was the main driver in creating St Albans RFC in 1970 and became it’s first Playing Chairman (a role for the next 15 years) and Club Captain A retired solicitor, he is married to Sue and lives in St Albans.

Peter Baines was the Hertfordshire representative on the RFU Council from 2002 to 2014, also serving on the county’s General and Forward Planning Committees, their Executive Committee, of which he was chairman, and was their representative on the English Counties Rugby Association, where he was also Chairman from 2000-2002. He was an RFU Management Board member for 10 years and Chairman of the Finance and Funding, and Governance Standing Committees.

He was also a founder trustee of the Injured Players Foundation and chaired the RFU for Women Integration Task Group, helping to ensure a smooth integration of the women’s game with the RFU. He is currently Chairman of the Agents Review Board.

So, if those are the credentials of holding such an office, just what is it that the President of the RFU does, what will be Peter Baines’ priorities and for what would he liked to be remembered at the end of his term ?

The role of the President ? Well - the President is head of rugby football in England. The prime responsibility is to promote and represent the Union’s role, reputation and interests.

The duties are mainly ambassadorial but as he also chairs RFU Council meetings and the Board Chairman works under his authority, there is inevitably some involvement in major issues affecting the game. He attends Board of Directors meetings but not in a voting capacity and does not play an active role in management.

The President is the principal host at England representative matches and at other social events organised by the RFU and he undertakes ceremonial duties such as presenting new caps, trophies and awards. Where possible, he represents the RFU at all matches at which an RFU representative team is playing.

In his presidential year Peter Baines will be attending

- 4 Autumn internationals,
- 3 home and 2 away 6 Nations games
- A June tour to Argentina, 2 test matches
- Several women's matches which he is particularly keen to support.
- The Las Vegas Sevens in March
- The Lions tour to New Zealand.

As they say - it is tough at the top!

Another vital part of the presidential role is to visit clubs and Constituent Bodies around the country making presentations and attending matches, lunches and dinners. Peter describes this as "perhaps the greatest joy of the job. It makes you realise how great the culture of rugby is and how it depends on the fantastic work done by literally thousands of volunteers for the love of the game. I was at the Durham Referees Society Dinner in West Hartlepool last night, off to Aspatria Rugby Club's Tatie Pot Supper tonight and St Albans v. Chestnut lunch and match tomorrow. Not good for the waistline! "

The RFU is now big business and it is important to maintain and grow revenues in order to invest in the game be it at professional and community level. However those at HQ should always be mindful that the Union is a Union of rugby clubs and societies whose interests the business must be run.

RFU proposals on "Player Wage Capping" have caused some ruffling of feathers around Clubs in our league as reported in the Rugby Paper. The proposals are included in the Round & About editorial. When asked about the proposals Peter Baines said :

"The RFU are concerned about the sustainability of some of these payment schemes which could well cause bigger financial problems for the Club. It does not mean that Clubs cannot exceed the limits it will however mean that Club will not be able to claim for Travel or capital projects."

The RWC was very profitable for the RFU who have been criticised for the ticket prices for 6 Nation and other major internationals. Profits earned by the RFU are dispersed to the clubs and whilst it may seem that Premiership Clubs are getting a disproportionate share those Clubs are having to sustain larger squads due to the ever increasing demand on players.

10 Questions in 30 seconds

Choose	Sandra Bullock	or	Jennifer Aniston
Prefer to watch	American Football	or	Aussie Rules
	Opera	or	Show Music
	Sightseeing	or	Laze by the Pool
	Italian Food	or	Chinese Food
	Port	or	Brandy
	Rolling Maul Try	or	Three Quarter Move
	Ella Fitzgerald	or	Adele
	The Beatles	or	Rolling Stones
	Theatre	or	Cinema

Sport you would most like outside of rugby
Who would you most like to have dinner with

Cricket
Perry Oliver !!!!!!!!

the physio& sports injury clinic

The Physio & Sports Injury Clinic based at Bishop's Stortford Rugby Club, supporting BSRFC from Minis to Seniors.

We treat all age groups and abilities, providing Quality Treatment for all types of muscle and joint problems in a Friendly and Supportive atmosphere by Experienced Chartered Physiotherapists.

Proud Sponsor of Bishop's Stortford Rugby Club

For appointments and information contact **07944 394096**

EMAIL: physioandsportsclinic@gmail.com

WEBSITE: www.physio-and-sports-injury-clinic.co.uk

Clinics Monday-Saturday with evening appointments available

Julie Wright BSc (Hons) MCSP Chartered Physiotherapist

The Physio and Sports Injury Clinic, Bishop's Stortford Rugby Club, Hadham Road, Bishop's Stortford, Herts, CM23 2QE

HAYTER
MAKERS OF THE FINEST MOWERS

Invest in a Hayter mower
today - be part of a
proud British tradition

Quality Rear Roller mowers for a
classic British striped lawn

Made locally at Spellbrook,
Bishop's Stortford

For more information contact: Tel: 01279 723444 sales@hayter.co.uk www.hayter.co.uk

We are always on the lookout for your property



Whether you're a landlord or tenant...
you want to work with someone who
understands all aspects of lettings.

Whether you're concerned about
process, putting people together or
getting things right legally, we can help.

Please call 01279 501500 to speak to one
of our property professionals



Bishop's Stortford College

Building Confidence for Life



You are warmly invited to our

OPEN MORNING

Saturday 12th November 2016, 9.45am arrival

**For Prep School Entry
Ages 7+ to 11+ (Years 3 – 7)**

**Visit our website for more information
www.bishopsstortfordcollege.org**



Bishop's Stortford College

Co-educational Day and Boarding 4 – 18 years

T. 01279 838607

E. psadmissions@bishopsstortfordcollege.org

Maze Green Road, Bishop's Stortford, Hertfordshire CM23 2PJ Charity No. 311057

Bishop's Stortford College and the Crest are registered trademarks of The Incorporated Bishop's Stortford College Association.

As well as offering a top academic education, let us stretch, engage, challenge and enthuse your child. By encouraging pupils to get excited about learning, together with offering a wealth of opportunity, we do more than just educate; we build confidence for life.

**Ranked within the top 100
Independent Schools based
on A Level results.
*Telegraph league table 2015***

CHAIRMAN'S VIEWS



Firstly, a very warm welcome to everyone this afternoon for our game against Taunton, which promises to be a tough outing for both sides based on previous encounters. We sit in fourth place, just above them in the League table currently, but with the same points total, so there is a lot to play for. We have been boosted by winning two consecutive away games, of which the win against Worthing was especially pleasing as it was the first time we have beaten them at their ground

since we have been playing them in this League.

The Worthing President commented to me before last week's game on the fact that almost two thirds of the players in our squad were home grown, having come through the mini and youth ranks, and that they have decided to go down the same path and develop a squad based on youth players coming through their coaching programme. They have concluded as a club that importing players is not sustainable and so are changing their approach.

We have long followed this approach and been very successful to date in developing our home grown talent. However, we cannot afford to sit back and assume that this will just continue to happen without a sustained effort if we are to keep encouraging our young players to grow and flourish. As I mentioned in previous notes, we have been running successful 'coaching the coaches' courses over the summer, led by Andy Long and his coaching team, which were very well received by all those who attended. First team squad members have been allocated to the various youth age groups and will be coaching them on occasional Sundays throughout the season, and Colt players are being encouraged to turn out for the Saturday social sides, to get a feeling for what the adult game is all about. All of which is part of our 'one club' ethos.

Our focus on youth development is about to become even broader with the adoption of the RFU's Young Rugby Ambassador initiative, which focuses on encouraging young players to actively engage in alternate rugby pathways, such as coaching and refereeing. Enthusiastically promoted by our Chairman of Youth, Pete Ainsworth, and supported by our Herts RDO, Mel Liley, the initiative has been launched with our U16 age group, who have responded very positively, with 18 signing up to do the coaching element and 21 to do the refereeing element. The aim is to show young players that there is more to the game than just playing and that there are other areas where they can make a contribution as a volunteer and develop their skills as coaches and/or referees. The more we can do to broaden their outlook, the longer we should be able to retain young people's interest in the game and develop the next generation of coaches and referees who also have a base of playing the game from a young age.

Yours in rugby
Colin Tilley
Chairman BSRFC



Proud to support Bishop's Stortford Rugby Club

Wealth management advice to kick-start your financial planning

We provide an experienced wealth management service
and offer specialist advice in a wide range of areas including:

- Investment planning
- Retirement planning
- Inheritance Tax planning

For further details contact GQ Wealth Management on:

Tel: 01279 210085

Email: leigh.gqwm@sjpp.co.uk Website: www.gqwm.co.uk

Tackling local issues



HERTS & ESSEX

OBSERVER

hertsandessexobserver.co.uk

print | online | mobile  

Belcom

Industrial Network Cables

A LOCAL COMPANY WITH INTERNATIONAL REACH SUPPORTING

BISHOP'S STORTFORD RFC

Our cables operate in some of the toughest environments within the industry worldwide.

We design and manufacture cables to the highest performance levels with third party verification, we are specified for use on the world's largest industrial projects.

No secret: Experience, common sense, plain speaking, technical knowhow and the will to deliver.

 01279 871 150
www.belcom.co.uk

INDUSTRIAL NETWORKS - NETWORK & DATA - MARINE, OIL & GAS - ENTERTAINMENT & BROADCAST - RETAIL & LEISURE - COMMERCIAL BUILDING - SECURITY - TRANSPORT INFRASTRUCTURE



Proud Supporters
of the
**Bishop's Stortford
Rugby Football Club**



Head Office

Market Square
Bishop's Stortford
Hertfordshire CM23 3UZ

t: 01279 755777



London Office

46 New Broad Street
London
EC2M 1JH

t: 020 7294 7330

www.nockolds.co.uk





HELPING YOUR BUSINESS SUCCEED

PROUD SUPPORTERS OF BISHOP'S STORTFORD RFC

Price Bailey offers a full range of compliance and advisory services from audit and assurance to strategic corporate finance, tax consulting, pensions and outsourcing. We are here to help you and your business to grow.

For further information please contact Gary Miller or Tony Pennison:

Gary Miller, Partner

T: 01279 712719

E: gary.miller@pricebailey.co.uk

Tony Pennison, Partner

T: 01279 712716

E: tonyp@pricebailey.co.uk

 **Price Bailey**
CHARTERED ACCOUNTANTS

pricebailey.co.uk

Price Bailey ® is registered as a UK trademark of Price Bailey Group Limited. © 2016 Price Bailey. For more information about Price Bailey and regulatory details please visit www.pricebailey.com/legal.



CHARTERHOUSE

VOICE & DATA



*Proud Sponsors of The Colts 2016/17
& The National Rugby Awards, Club Sponsor of the Year!*



The UK's Club Sponsor of the Year

LIFE AND TIMES WITH BISHOP'S STORTFORD COLTS

Bishop's Stortford has incredible strength in its Colts group, not just measured by the success the club has achieved in the National competitions (we were in the final of both the 17's and 18's last season) but equally important is the huge number of players that are involved. Most clubs are struggling to run 2 teams for the combined 17/18's age group, but at BS we run 4 sides and have over 70 players registered.

One of the key aims for the Colts coaching and management team is to make sure there is a regular flow of players from the Colts section in to the senior sides, and during pre-season training a few of the Colts players were invited to train with the 1st XV and Blues. Six players have already played for one of the senior sides. A number of players are currently representing county teams in the annual grading games over a 3 week period. The Colts training sessions, on a Thursday evening, have also benefitted from the help of a number of the 1st XV coaches. The Colts coaching team is also increasingly independent from the players, being selected by Andy Long rather than just parents of the players, and also includes two of the current Blues team .

This season we have made a good start in the National Colts cup, beating Southwold and now travel to play Colchester in the 3rd round on 13th November. In the League games, our 17B's have one win and one loss so far. Our 18B's have not had a league game yet as two opposition teams have conceded due to being unable to raise a side. The 18A's lost their first league game with a depleted side due to both injuries from school fixtures and players away with their county side. The 17A's have their first league game tomorrow, at home to Ruislip. We have county cup and plate competitions for both age groups to look forward to after Christmas, as well as a separate National competition for the U17's.

We take players of all ability levels and take as much pride from ex-Colts representing the 5th XV as we do the 1st XV. Training is on Thursday evenings at 7pm and Sunday mornings at 11am for anyone looking to join.

David Doherty of Charterhouse Voice & Data writes on why his company sponsor Bishop's Stortford :

"All four of my children (boys and girls) played rugby at Bishop's Stortford and the fun that we all had as part of the club is the main reason I chose to begin sponsoring the club. 12 years later and I'm still sponsoring because of the joy I get seeing how it helps support the Colt's.

I remember witnessing the hard work and time given by so many when it came to ensuring the club's success. As I'm unable to give that amount of time, I feel that by being a sponsor I'm a part of both the club and a contributor to its success.

We were very recently named Club Sponsor of the Year at the National Rugby Awards; the recognition was nice, but more importantly this award meant that our sponsorship is genuinely helping the Colt's and the club develop, which is immensely satisfying. I look forward to many more years of sponsoring and being a part of Bishop's Stortford Rugby Club".

Mark Purdy and David Doherty, Charterhouse Voice & Data.

PROUD SUPPORTERS OF BISHOP'S STORTFORD RFC

OUR HERITAGE,
OUR PASSION.
YOUR IPA.

greenekingipa.co.uk



GREENE KING
BURY ST EDMUNDS



MiHome™

is a Smart Home



take control of your home using your smartphone, tablet or PC

MiHome Sockets



MiHome Lights



MiHome Relay



MiHome Heating



ENERGENIE®
your switch is my command

BIT Solutions

Premier support, individually tailored



BIT Solutions are big on ideas, expertise and results

And small where it matters, offering the personal touch and tailored solutions. BIT Solutions are a leading provider of cloud and on premise IT solutions for clients throughout the South of England.

With our enterprise cloud platform located in two of the most advanced datacentres in Hertfordshire we are able to provide our clients with flexible, high performance and ultra reliable cloud solutions to suit every need.

We also offer strategic IT planning, on premise IT infrastructure design, assistance to in-house IT teams and a range of business IT support plans.

Proud sponsors of Bishop's Stortford Rugby Club

tel: 0845 459 4172 email: info@bitsolutions.net web: www.bitsolutions.net

Your local **Bishop's Stortford** branch has everything you need to get the job done!

- Extended product range
- Increased stock
- Next day delivery
- Great team



Unit 10, Woodside, Dunmow Road,
Bishop's Stortford. CM23 5RG
Tel: 01279 505666



Nick Hankin



Declan Caufield



Johnny Neville

Worthing 30

Bishop's Stortford 1st XV 36

By John Allanson

Worthing settle for 2 losing bonus points, as strong finish by Stortford brings a first away win in a National 2 game between the two clubs.

Worthing started strongly whilst the visitors conceded two penalties at breakdowns and failed to clear their lines. Worthing pressed and following several phases of play involving both forwards and backs produced an unconverted try.

Stortford bounced back from this setback to force two quick penalties, the second, close to the Worthing line also produced a yellow card for the home side's No 4. The visitors quickly capitalised on the one man advantage and after the forwards had threatened at close quarters, the ball was moved swiftly to the left wing, where fullback, Will Simmonds used the overlap to dummy his way in for an equalising unconverted try on 15 minutes.

With their pack going very well in the scrums, Stortford were soon back on the attack, breaking out of their own 22 via a typically powerful run from Mark McCraith, supported by Will Simmonds to take them to the opposition 22, where quick hands saw George Cullen over in the same corner, having bounced through an uncompleted tackle to regain his feet and dive over for another unconverted try on 19 minutes. Four minutes later and Stortford once more attacked from deep, with Tom Banks making an initial break and feeding Nick Hankin, who kicked ahead for the speedy Simmonds to win the chase for the touchdown. Banks' conversion took the score out to 5-17.

Crucial mistakes on both sides prevented any further score until the final minutes of the half, when Worthing took 3 points after a penalty at a breakdown some 30 yards out. 8-17 at halftime.

Worthing took advantage of Stortford slow start to the second period, with some aggressive running and good ball retention creating an overlap on the left, which was ruthlessly exploited, when Kiba Richards cut in against the grain of the drift defence to touch down under the posts to narrow the deficit to 2 points. The home team enjoyed much the better of the play over the next quarter of an hour, as Stortford kicked away most of what little possession they were able to get. After 18 minutes McLean took his side into a one point lead. His penalty was, however, soon matched by Banks after stretching the Worthing defence close to breaking point. The scoring tempo lifted and it was Stortford who were almost immediately back on the board after 22 minutes, when Simmonds bagged his hat trick try, seizing on a loose ball and using his pace to slice through the off-balance defence to touch down under the posts, giving Banks an easy conversion.

Three minutes later and it was Banks again who add three points with a good long range penalty for a high tackle, after pressure from the forwards with Rory Young and Dec Caulfield prominent. Worthing were not giving up, though and a penalty conceded by Stortford was kicked to touch some 8 metres out. The visitors' defence seemed to be caught off balance as the ball from the lineout was moved quickly infield, rather than being driven at the line, powerful running saw them touch down under the posts, with the routine conversion, narrowing the lead to 5 points on 28 minutes.

Back on the attack, though and two excellent strikes from Banks after 31 and 35 minutes added another 6 points to the visitors' score as two more penalties were forced. The final score of the half went to the home side, as a Stortford scrum was put under pressure as Worthing took full advantage of the retreating ball to win a penalty for not releasing in the tackle. This was kicked into touch and Stortford had no answer to the driving maul from the lineout. As the conversion attempt went wide, the home side still required a converted try if they were to snatch a win and, as they failed to gather the restart kick, which found touch close to their own line, they settled for the 2 losing bonus points.

Results Grid

National League 2 South

	Bames	B'stple	BSRFC	BuryStLE	C'bury	Chinnor	C'ford	Clifton	Exm'th	HenleyH	L'linshWVG	O'Elth's	Red'Rams	Redruth	Taunton	Worthing
Bames		05-Nov	3/9 13 - 20	11-Mar	03-Dec	15/10 28 - 61	19-Nov	22-Apr	29-Oct	1/10 36 - 14	14-Jan	01-Apr	11-Feb	28-Jan	17/9 27 - 35	17-Dec
B'stple	04-Mar		15/10 8 - 47	25-Mar	17/9 28 - 43	14-Jan	08-Apr	1/10 24 - 22	11-Feb	10-Dec	26-Nov	3/9 8 - 31	25-Jan	17-Dec	12-Nov	17-Nov
BSRFC	29-Apr	04-Feb		10/9 36 - 7	21-Jan	26-Nov	07-Jan	08-Oct	10-Dec	12-Nov	04-Mar	24/9 19 - 22	08-Apr	25-Mar	29-Oct	11-Feb
Bury StLE	12-Nov	19-Nov	17-Dec		12-Apr	11-Feb	01-Apr	3/9 30 - 10	04-Mar	28-Jan	1/10 39 - 15	03-Dec	28-Oct	15/10 22 - 35	14-Jan	17/9 20 - 10
C'bury	08-Apr	07-Jan	1/10 38 - 34	10-Dec		12-Nov	29-Apr	30 - 10	26-Nov	27-Oct	11-Feb	10/9 15 - 17	25-Mar	04-Mar	15/10 22 - 25	28-Jan
Chinnor	04-Feb	24/9 76 - 5	01-Apr	22/10 45 - 14	11-Mar		18-Feb	19-Nov	8/10 83 - 7	17-Dec	3/9 47 - 10	05-Nov	21-Jan	17/9 21 - 5	22-Apr	03-Dec
C'ford	25-Mar	03-Dec	17/9 15 - 22	26-Nov	3/9 14 - 7	29-Oct		17-Feb	12-Nov	15/10 30 - 23	28-Jan	22-Apr	04-Mar	11-Feb	1/10 29 - 34	14-Jan
Clifton	10-Dec	21-Jan	28-Jan	29-Apr	24/9 25 - 20	25-Mar	10/9 25 - 31		08-Apr	04-Mar	29-Oct	07-Jan	26-Nov	12-Nov	11-Feb	15/10 35 - 22
Exm'th	18-Feb	22/10 38 - 20	22-Apr	05-Nov	01-Apr	28-Jan	11-Mar	03-Dec		14-Jan	17/9 20 - 40	19-Nov	15/10 7 - 7	1/10 17 - 60	17-Dec	3/9 10 - 22
HenleyH	21-Jan	22-Apr	11-Mar	8/10 41 - 36	11-Feb	10/9 13 - 22	04-Feb	05-Nov	24/9 43 - 38		03-Dec	22/10 20 - 30	07-Jan	29-Apr	01-Apr	17-Nov
L'linshWVG	24/9 31 - 17	01-Apr	05-Nov	21-Jan	22/10 34 - 29	29-Apr	08-Oct	18-Feb	07-Jan	08-Apr		04-Feb	10/9 13 - 28	10-Dec	19-Nov	11-Mar
O'Elth's	26-Nov	29-Apr	14-Jan	08-Apr	17-Dec	04-Mar	10-Dec	17/9 46 - 19	25-Mar	11-Feb	15/10 38 - 17		12-Nov	29-Oct	28-Nov	1/10 37 17
Red'Rams	22/10 33 - 12	8/10 31 - 20	03-Dec	18-Feb	19-Nov	1/10 17 - 32	05-Nov	01-Apr	04-Feb	17/9 22 - 26	17-Dec	11-Mar		14-Jan	3/9 22 - 39	22-Apr
Redruth	8/10 26 - 20	10/9 48 - 12	19-Nov	04-Feb	05-Nov	07-Jan	22/10 54 - 11	11-Mar	21-Jan	3/9 23 - 18	22-Apr	18-Feb	24/9 10 - 8		03-Dec	01-Apr
Taunton	07-Jan	11-Mar	18-Feb	24/9 30 - 26	04-Feb	10-Dec	21-Jan	22/10 30 - 32	10/9 59 - 10	26-Nov	25-Mar	8/10 14 - 44	29-Apr	08-Apr		05-Nov
Worthing	10/9 20 - 17	18-Feb	22/10 30 - 36	07-Jan	8/10 30 - 12	08-Apr	24/9 21 - 15	04-Feb	29-Apr	25-Mar	12-Nov	21-Jan	10-Dec	26-Nov	04-Mar	

Results & Fixtures

Results Saturday 22 Oct 2016

Home	F	A	Away
Exmouth	38	20	Barnstaple
Redingensians Rams	33	12	Barnes
Chinnor	45	14	Bury St Edmunds
Henley Hawks	20	30	Old Elthamians
Redruth	54	11	Cinderford
Taunton Titans	30	32	Clifton
Worthing Raiders	30	36	Bishops Stortford
London Irish Wild Geese	34	29	Canterbury

Fixtures Saturday 29 Oct 2016

Home Team		Away Team	Kick Off
Old Elthamians	V	Redruth	14:00
Barnes	V	Exmouth	14:30
Barnstaple	V	Worthing Raiders	14:30
Clifton	V	London Irish Wild Geese	14:30
Bishops Stortford	V	Taunton Titans	14:30
Bury St Edmunds	V	Redingensians Rams	15:00
Canterbury	V	Henley Hawks	15:00
Cinderford	V	Chinnor	15:00

National League 2 South

Club	PLD	W	D	L	F	A	PD	TBP	LBP	Ded	Pts
1) Chinnor	8	8	0	0	387	99	288	6	0	0	38
2) Old Elthamians	8	8	0	0	265	129	136	5	0	0	37
3) Redruth	8	7	0	1	261	129	132	5	0	0	33
4) Bishops Stortford	8	6	0	2	269	133	136	6	2	0	32
5) Taunton Titans	8	6	0	2	266	212	54	7	1	0	32
6) Worthing Raiders	8	4	0	4	172	180	-8	1	1	0	18
7) Cinderford	8	4	0	4	180	210	-30	4	3	5	18
8) Redingensians Rams	8	3	1	4	168	159	9	1	2	0	17
9) Bury St Edmunds	8	3	0	5	194	222	-28	2	2	0	16
10) Henley Hawks	8	3	0	5	198	237	-39	2	2	0	16
11) London Irish WG	8	3	0	5	184	253	-69	4	0	0	16
12) Clifton	8	3	0	5	166	258	-92	2	2	0	16
13) Canterbury	8	2	0	6	186	205	-19	2	5	0	15
14) Barnes	8	1	0	7	170	240	-70	3	3	0	10
15) Exmouth	8	1	1	6	147	334	-187	2	1	0	9
16) Barnstaple	8	1	0	7	123	336	-213	1	0	0	5



BISHOP'S STORTFORD RFC

BLUE & WHITE

DANNY JOHNSTON	COACH
RICHARD GILL	
TOM COLEMAN	
MARCUS CATTELL	DIRECTOR
ANDY LONG	
ED MERIVALE	
CHRIS LANSDOWNE	TEAM M
	PHY



JIMMY REA



TOM BANKS



HUGH MICHELL



MARK McCRAITH



RORY YOUNG



WILL SIMMONDS



TOM COLEMAN (C)



STEVE BALL



MATT TOMLINSON



DECLAN CAULFIELD



GEORGE CULLEN



DAN ELSOM



TOM McCRONE



JOHNNY NEVILLE



NICK HANKIN



MARCUS BROWN



SEB BROWNHILL



OLI JONES



JACOB TURNER



RYAN HUTLER

REPLACEMENT

MATCH DAY SPONSOR
 INTERESTED?
 CONTACT:
 Julie North
 julienorth1@gmail.com

REFEREE MR. LUIS CAVIGLIA	ASST REFS 1. MR. ANDREW JACKSON 2. MR. PETER CROUCH
-------------------------------------	--

Please note that our bar licence specifically forbids the taking of glasses and glass bottles onto the field. Reusable, rigid

TAUNTON

BLACK AND MAROON



CHES	CHRIS BROWN
OF RUGBY	TONY YAPP
ANAGER	KEITH BROOKING
SIO	JOHN SPURR & SANDRA WILLIAMS



JAKE CAULFIELD



JON GATFORD



JAMES NEWSAM



RICHARD BRIGHT



WILLIAMS



BEN OLIPHANT-THOMPSON



OLI MASSY-BIRCH



ARON STRUMINSKI



ALEC CHASE



BLAKE LUGG



STU PERSEY



GARY KINGDOM



FREDDIE FRASER



NICK MASON



LEWIS PRATTEN

NUMBERS



MATT TICHAS



DAVE EDWARDS



SAM PRIOR



CHARLIE TRIBBLE



ALEX SPURDLE

ASSESSOR
MR. PAUL DUNNETT

REFEREE COACH
MR. PETER TOPHAM





Tees & BSRFC - a winning team.

It's very important to the people at Tees that we support our local community and sport plays an important role in every community. Tees and BSRFC are both committed to promoting our own talent to build great teams from within and we have great success stories to show for it.

At Tees we are proud of the team of experts we have built. When you need legal or financial advice, we're here to help you.

01279 882421
www.teeslaw.co.uk &
www.teesfinancial.co.uk

Tees Law is a trading name of Stanley Tee LLP regulated by the Solicitors Regulation Authority.
Registered in England and Wales number OC327874.

Tees Financial is the trading name of Tees Financial Limited - Authorised and regulated by the Financial Conduct Authority.
Registered in England and Wales number 4342506.



ANDREW BANKS

Wood Flooring Specialist



TEAMWORK
MAKES THE
DREAM WORK

www.andrewbanks.co.uk

KORUGYM

strength + fitness

OPEN NOW



DON'T DREAM OF IT. TRAIN FOR IT.

Without doubt, the best training facility
in the area. Come and check us out.

Peek Business Park, Woodside, Bishops Stortford, CM23 5RG

T: 01279 506487 E: team@korugym.com

www.korugym.com



Proud supporters of
Bishop's Stortford Rugby Football Club



Strategic Financial Planning

We want to understand our clients' goals and values. Then deliver ongoing strategic advice aligned to these goals and values.

We aim to have a personal, long standing relationship with all our clients. We adopt a personal and comprehensive approach to each individual's financial circumstances and help to improve their financial strength through protecting and generating wealth as well as consolidating and focusing their existing plans.

**To discuss how we may be able to help you achieve your financial goals call us on
01279 874480**



Heating & Plumbing

20 Rectory Lane, Farnham,
Bishop's Stortford, CM23 1HU,
Email: nharper114@aol.com

Proud members of
Checkatrade.com
Where reputation matters



01279 771 981
harpersplumbing.co.uk



You can rely on a Worcester...

The only gas boiler manufacturer
to be awarded **Which? Best Buy**
for 6 years running...

**and you can rely
on us to install them**

#ChangeTheGame

 **RedPixie**



fishnchickn[®]

One taste and you'll be hooked...

PROUD SPONSORS OF BISHOP'S STORTFORD RUGBY CLUB FOR THE 2016/17 SEASON



WE CAN CATER FOR PARTIES OR CELEBRATIONS

Let us deliver piping hot delicious fish and chips to your door! Each individual portion comes in a hot pack with a knife, fork, face wipe, salt, vinegar and a paper napkin.

MEAL	ORDERS UNDER 100 PORTIONS PRICE PER PORTION	ORDERS OVER 100 PORTIONS PRICE PER PORTION
COD & CHIPS	£5.60	£5.45
HADDOCK & CHIPS	£5.60	£5.45
1/4 CHICKEN & CHIPS	£4.50	£4.35
JUMBO SAUSAGE & CHIPS	£3.20	£3.15
VEGETARIAN BURGER & CHIPS	£3.60	£3.50

Price includes delivery (for orders of 50 portions or less there will be a £15.00 Delivery charge).

Our staff will even clear all of the rubbish away for you!

Please call our head office on 01279 713560 to check availability and place your order.

For more information visit our website at

www.fishnchickn.co.uk

or why not visit your local branch at

8 Thorley Centre, Thorley Park, Bishop's Stortford CM23 4EG

tel: 01279 466283

OPINIONS FROM THE TOUCHLINE

REFEREEING THE DARKER ARTS – The Set Scrum

Who would want to be a football referee ? Haranged and jostled by players and the abuse from spectators must make the task almost as popular as a Saturday shopping trip to Lakeside or Blue Water,

The discipline and respect that rugby currently enjoys must be preserved and protected for the benefit of all.

However, without the experience of what goes on in scrums, rucks and to some extent mauls there is going to be inconsistency in the way that the laws are interpreted. We hear TV commentators suggesting that the referee awards penalties alternately as they just do not know what or who is causing the incidents. Sometimes this leads to players becoming more frustrated and scuffles breaking out.

Several of the Referees at our level have a coach so why can't every referee have a front row mentor? Someone who has played in that position and knows about the things that go on. They need to sit in more with Premiership clubs and speak to front row forwards to find out what is going on.

Scrummaging can win a game – it can certainly turn a situation. By the same token incorrect decisions at the scrum can also affect the result. Stortford had the edge in the set piece against Old Elthamians and were still leading as full time was approaching. But OE's had come back strongly in the second half and had the momentum behind them. Awarded a penalty just 5 metres from OE's try line Stottford elected a scrum planning a push over try and would leave OE's needing to score twice. The opposition were going backwards and the ball was at the feet of the back row – but it waa Stortford who were penalised.

There are always going to be coaches (as well as supporters) who complain about the injustices to their team, but it is not being suggested that the dominant scrum will always be in the right. Referees have to make an instant decision but this also means reading the wider situation which should mean that it is less likely the dominant scrum would want to give a penalty away.

We don't want to see what happens in football where there is public debate on the merits of individual referees, but with the new Laws on Scrums and Mauls there does need to be more consistency in the interpretation

Referees are regularly observed and graded by RFU qualified assessors. Often they will spend post match time with the Coaches from both sides and seek their opinion on their day's performance. With games being video recorded with such evidence used in disciplinary hearings those recordings can also be used in educational for referees. As a rugby spectator remember to respect those doing what is already a tough job.





Impressive selection (just like ours).

Das WeltAuto.

Used cars you can trust. Guaranteed.

12 months Roadside Assistance

12 months warranty

142 point check

30 days or 1,000 miles

'no quibble' exchange policy

Servicing

Collection and delivery

Courtesy cars available

MOT

Price Match on Volkswagen servicing and repairs

M J Warner

Hare Street, Buntingford, Hertfordshire, SG9 0EA.

Telephone: 01763 290145.

www.mjwarner.co.uk



Volkswagen



We try harder.

Backup and disaster recovery for Education and Business

CALL NOW

01279 465 654

www.gigasoftdatabackup.co.uk



Opening Hours

Lunch

Open 7 days a week
11.30am to 2.00pm

Dinner

Sunday - Thursday
5.00pm to 11.00pm
Friday & Saturday
5.00pm to midnight

Find Us

24 Hadham Road,
Bishop's Stortford, CM23 2QS

01279 507777/658888

Order Online

www.zara-dining.com

Zara

Indian Dining

*Modern Indian Dining
in Elegant Surroundings*

We are a family friendly restaurant, serving innovative Indian cuisine for those who enjoy good food and wine with friends in a relaxed atmosphere in the heart of Bishops Stortford.

Why not pop in for just a glass of wine or one of our specially selected cocktails before your meal.

Or order a take-away by phone or from our web site.



LADLERS
RED POLL

JR Farming

Fuelling our 1st XV this
Season with Red Poll Beef !



Providing Bishop's Stortford & surrounding
areas with **SCRUMmy** local beef ...



LADLERS
RED POLL

Ladlers, Dunmow, Essex, CM6 1SP

07729 562996 ladlers@hotmail.co.uk

www.facebook.com/ladlersredpoll

Barnstaple 8 Bishop's Stortford 45

Stortford's powerful pack underpins convincing team victory in very difficult conditions

With rain pouring down for most of the game, meant that the forwards would need to dominate, though it has to be said that the handling of Stortford's backs was very impressive. The Stortford eight provided the platform and with almost total dominance in the scrums, and lineout this was an impressive performance. It was a couple of dominant scrums, leading to penalties that took the visitors to the Barnstaple 5 metre line after 8 minutes, producing a try to Jimmy Rea at the back of a driving maul from a lineout. A great conversion by Tom Banks from the touchline stretched the lead to 7 points

6 minutes later Nick Hankin cut an excellent line in off his wing to take a well-timed pass from Rea. Banks again added the extras. After 28 minutes of the half, Steve Ball touched down from the back of another driving maul, following Barnstaples woes at the scrum had been worsened by one of their props being yellow-carded for a high tackle.

Having been restored to 15 men, the home side scored a penalty goal after a couple of quick penalties were conceded by Stortford and then enjoyed a period of good pressure, with both forwards and backs threatening only some excellent Stortford defence held them out – including holding their centre up after he caught a clever chip from his flyhalf over the line.

Defence was turned into attack just before the break, a reversed penalty for foul play was kicked to the corner and a driving maul from the lineout saw Sean Edwards in for the bonus point try, once more converted by Banks.

Stortford started the second half as they had finished the first and some powerful driving play from the restart sucked in the home defence, before quick ball to the backs allowed Will Simmonds to make a telling half break and feed Ryan Hutler, off the bench for the injured Pier Dotta, for an unconverted try out wide. Stortford lost two players to yellow cards in quick succession. The first was against Tom Coleman. The second card, to Dan Elsom was a team penalty for offences in rapid succession at breakdowns and the home team quickly took advantage of their 2 man edge to score a try, following a period of strong pressure on the Stortford line. Tom McCrone incurred the ref's displeasure for an offence at a breakdown to take his side back to 13 men briefly, before Elsom's return. Stortford, nevertheless, were now steadily getting back on top. Replacement Ollie Jones, on for Ball at No 8 scored the next try with an excellent solo break from the back of a scrum some 12 metres out. The scoring was rounded off 3 minutes later, when Banks sniped from the base of a ruck to slide over for the 7th try, which he converted himself. This was not before, though, skipper, Tom Coleman had added a note of light relief by crumpling into a heap some 10 yards short of the Barnstaple line and with no defender anywhere near, after he had stepped smartly in to take a clean interception, as the home side had threatened to break out of their half. Rumours of a sniper in the stand proved to have been unfounded and, despite an exhaustive search after the game, no trace of a tripwire could be found!



Steve Ball



Nick Hankin



Jacob Turner

Free 5 Day Membership at Nuffield Health Bishop's Stortford



- ✓ Swimming Pool (20m) with Sauna, Steam Room & Spa Facilities
- ✓ Large Gym area containing Cardio equipment (treadmills, cross-trainers, steppers, rowing machines & bikes); Functional Training area with TRX, punch-bag, ropes & kettle bells.
- ✓ Free weights area with two squat racks & large variety of cabled equipment to work all your muscle groups, Power plate & two hydration units.
- ✓ Two studios where over 80 classes are held throughout the week including Zumba, Pilates, Yoga, Cycle, Body Balance, Boxercise, Body Pump...
- ✓ Relaxation area providing treatments including massages, facials & nail treatments where Elemis products are used.
- ✓ Swim School providing group & private swimming lessons.
- ✓ Café Bar providing hot/cold drinks, sandwiches, salads & range of hot food options
- ✓ In Addition to above you will receive free MOT health check & Programme with a Personal Trainer

Contact Iryna Moulding on 01279507002 or iryna.moulding@nuffieldhealth.com

Offer valid until 18th of December 2016. Terms and conditions apply.



MullucksWells

Delighted to support
BSRFC

THE COMPLETE PROPERTY SPECIALISTS

We offer a comprehensive Residential and Commercial Sales, Lettings and Property Management Service with a dedicated Land & New Homes division.

We have offices in Bishop's Stortford, Saffron Walden, Great Dunmow and Epping so have outstanding coverage along the M11 corridor from Cambridge to London.

We are governed by four recognised industry bodies and our knowledgeable teams work to the highest professional standards so you can rest assured your property is in safe hands.

If we can help with any property matter, we would be delighted to do so.



See all our properties at



BISHOP'S STORTFORD

T: 01279 755400

E: mullucks@mullucks.co.uk

SAFFRON WALDEN

T: 01799 520520

E: walden@mullucks.co.uk

GREAT DUNMOW

T: 01371 872117

E: dunmow@mullucks.co.uk

EPPING

T: 01992 560560

E: epping@mullucks.co.uk

MAYFAIR OFFICE

T: 0870 112 7099

E: info@mayfairoffice.co.uk

www.mullucks.co.uk

SALES

COMMERCIAL

LETTINGS

LAND & NEW HOMES

YOUR TREASURER NEEDS YOU

We talk a lot about a “One Club Ethos” and yet here we are with THREE Clubs within BSRFC :- The 100 Club, The Oval Club and Club Stortford.

Each exists for the same purpose – raising additional funds, but each has their own priorities. The 100 Club has been around the longest where the member donates on a monthly, quarterly or annual basis to be entered into a monthly draw of £100 and an annual draw of £1,000.

The Oval Club and Club Stortford are introduced below and you will note how each have their own priorities when it comes to supporting areas within the Club.

Which are you a member of ? Apart from helping with Club Finances the Oval Club and Club Stortford provide a social environment for meeting like minded people and fulfilling the one purpose - BSRFC

CLUB STORTFORD

Now in its fourth season, Club Stortford was set up by a small working party, to support the 1st XV squad after promotion to National League Rugby in 2013/14. Our aim is “to ensure Bishop’s Stortford RFC has a sustainable future in National League Rugby and continues to nurture home grown talent.”

Working in conjunction with the 1st XV coaching team, CS provides funding for various expenditure beyond the financial resources of the main club. These are specific to the first team squad, and include items such as strength and conditioning, video analysis of matches, equipment, travel and overnight stays for long distance away fixtures.

Director of Rugby, Andy Long, has reiterated on a number of occasions the importance he attaches to the financial support given by Club Stortford. Quite simply, without it’s support, the team would not be able to perform at such currently high levels. Two third place finishes, together with a second place play off in the last three seasons is an outstanding achievement. Club Stortford currently has 30 likeminded members, all willing to provide the necessary funds to allow the club to continue to play at the current level.

These are either individual, corporate or syndicate members, enjoying various benefits associated with their membership.

We continue to look for new members, to allow us to broaden and deepen the extent of our support. We would urge you to consider joining Club Stortford. If you are interested and would like further information, please contact our secretary, Russell Cattell 07778 101988, or our chairman Neil Parker 07860 300080.

THE OVAL CLUB

In 1998 some Rugby Club members got together to try to find a way of raising funds to help the Club. Several schemes were discussed but ultimately The Oval Club was founded with the aim 'To contribute towards promoting the highest possible standard of rugby throughout Bishop's Stortford Rugby Football Club'. A committee of five was formed and it was decided that The Oval Club should be autonomous and entirely independent of the Rugby Club's financial and administrative operations. It communicates with the Rugby Club through one person who channels all requests for financial assistance to The Oval Club with the full knowledge of the Rugby Club's Executive Committee.

From The Oval Club's fund two thirds of the income are donated to specific projects that the Rugby Club wants to undertake and the other third is reserved for a members' fund to provide social occasions as a means of payback. A principle that The Oval Club has always stood by is that it will endeavour to provide funds for one-off projects and not regular requirements that should be undertaken through the budget of the Rugby Club. It has been instrumental in providing funds to start projects such as the drainage and floodlighting of the back pitches, improvement and maintenance of all playing surfaces, supporting Youth and Mini through, tours, kit and additional playing facilities and refurbishing changing room showers. Without this starter outside funding would not have been forthcoming. The Oval Club has raised over £204,000 of which the Rugby Club has received in excess of £130,000 for its projects. On the social side of The Oval Club members have enjoyed several events each year provided by their fund.

The membership has remained around 70 and any would-be members are invited to join by contacting John Robinson, the Secretary.

It can be seen that The Oval Club has played a considerable part in providing much needed funds for the Rugby Club to provide facilities to help it enhance its reputation within the rugby community at large and possibly without these funds the Rugby Club would have been poorly placed to achieve the results and standards it seeks.



Belcom

Industrial Network Cables

A LOCAL COMPANY WITH INTERNATIONAL REACH SUPPORTING

BISHOP'S STORTFORD RFC

Our cables operate in some of the toughest environments within the industry worldwide.

We design and manufacture cables to the highest performance levels with third party verification, we are specified for use on the world's largest industrial projects.

No secret: Experience, common sense, plain speaking, technical knowhow and the will to deliver.

 01279 871 150
www.belcom.co.uk

INDUSTRIAL NETWORKS - NETWORK & DATA - MARINE, OIL & GAS - ENTERTAINMENT & BROADCAST - RETAIL & LEISURE - COMMERCIAL BUILDING - SECURITY - TRANSPORT INFRASTRUCTURE

David
Chalk
Photography



Event Commercial Photography
www.davidchalk.co.uk
mail@davidchalk.co.uk
0207 871 181

WE ARE VERY PROUD TO SUPPORT
BISHOP'S STORTFORD RUGBY FOOTBALL CLUB
GOOD LUCK FOR THE REST OF THE SEASON



**CONNECT
SCAFFOLDING**



**CONNECT
EVENTS**



**CONNECT
HOISTS**



Safer, easier, quicker ... better connected!



MULTITECH

SITE SERVICES

Temporary Electrics - Permanent Commitment®

BSRFC SPONSORS

AND SUPPLIERS OF TEMPORARY SITE SERVICES TO
THE UK CONSTRUCTION INDUSTRY SINCE 1998

New Game, New Job?

Check out the latest career opportunities at Multitech:

www.temporary-electrics.co.uk/careers

See if you can join our talented team (*no gum shields required*)

temporary-electrics.co.uk

Multitech Site Services Ltd, Multitech House,
Flitch Industrial Estate, Great Dunmow, Essex CM6 1XJ. Telephone: 01371 877060

Reedside Ltd (Ben Clarke)

Offices To Let

From starter units of 150sq. ft. increasing in size.

All with parking, near to railway station.

Keen prices, lease or licence.

Tel: 01279 658 301

Fax: 01279 506 126

Email: jsbclarke@zoo.co.uk

Properties:

The Maltings, Southmill Road, Bishop's Stortford, Herts.

The Maltings, Station Road, Sawbridgeworth, Herts.

mantle

BUSINESS CENTRES

creating better business spaces

Mantle Business Centres operates high quality business centres in Stansted, Chelmsford, Cambridge and Duxford. Contact us now on **0333 00 66 330** to find out how we can help your business to grow.



SERVICED OFFICES



FLEXI OFFICES



VIRTUAL OFFICES



MEETING SPACES

We'll work around the clock to find a buyer for your property...

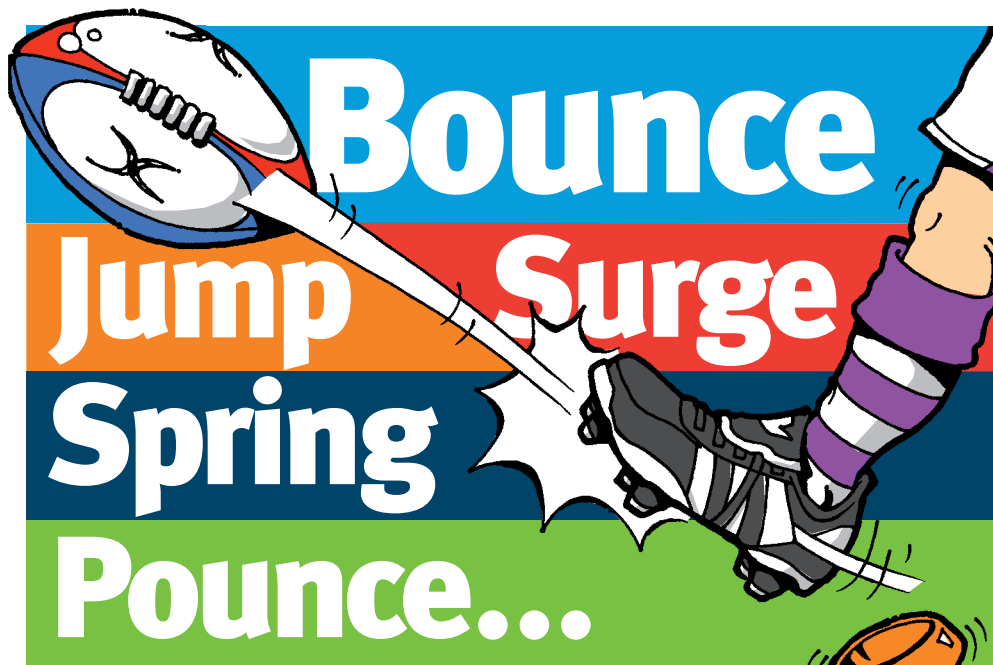


Considering a move this year?

With a wealth of local knowledge Russell Property can advise you on the best ways to maximise your homes full potential when moving.

Please call 01279 501500 to speak to one of our property professionals who will help guide you through the moving process.





Propel your business into the **New Season!**

Find out how we can help reduce costs in your office and make life easier for you and your staff with increased productivity and profit!

System One will streamline your office workflow with a range of multi-functional devices to suit both your working environment and your pocket.

System Two will design, print and provide mailing services, helping you to promote your business, services or products.

Get in touch now to find out more...

SystemOne
SIMPLE OFFICE SOLUTIONS

01279 602700
www.systemone.co.uk



SystemTwo
PRINT SOLUTIONS

01279 602709
www.systemtwo.co.uk



Rhodes in Association with Phoenix Theatre Arts
proudly present

Phoenix
THEATRE ARTS

Your
Local
Theatre

CINDERELLA

Directed by Phil Dale

The Magical Family Pantomime

10th December 2016 -
7th January 2017

Choreography by
Katie
Barker-Dale

Music Arranged &
Produced by
Ross Simpson

*"With tradition at its core,
Phoenix Theatre Arts enhances its
reputation with this seasonal gem."*

Nal. Times, The Stage 2015



Tickets £16 - £20, £62 - £70 Family

Box Office 01279 710200

www.rhodesbishopsstortford.org.uk



Sponsored by



f RhodesPantomime

#RhodesPanto

ROUND & ABOUT THE CLUB

BSRFC MINI FESTIVAL



Sponsored by Nockolds

The annual mini rugby festival at Bishop's Stortford Rugby Football Club has brought, for the last 7 seasons, players from the ages of 6 to 12 from clubs across Hertfordshire, Essex and Cambridgeshire to Silver Leys to participate in a wonderful day of rugby.

This years event, was another fantastic occasion where after an early squall, the sun shone on all involved and 700 youngsters with 1000 + spectators enjoyed a great day of tries, tackles, tags and, for the first time in the older age groups, hand-offs.

This year, in an attempt to pass on the baton from those who have organised the event since it's inception, our Under 9 age group took the reins of responsibility and experienced the quick learning curve that is festival planning at BSRFC. They were helped in the build up and on the day by Nockolds Solicitors who sponsored the event for the second time. The help Nockolds provide our festival cannot be overestimated as in addition to providing financial support and supplying gifts for the participants, several members of the Nockolds team join us at the club on the day to help with the smooth running of the event and for this we are immensely grateful.
Alasdair Jones, Vice Chairman of Mini Rugby

RFU Player wage cap proposals

Controversial RFU plans to impose wage caps on clubs below the Championship from 2018-19 are set to meet widespread opposition, particularly from ambitious sides with designs on promotion.

"The RFU has determined that payments for playing rugby in the community game are having a detrimental effect on the ethos of the game and the development of some clubs. Expenditure levels within the community game are unsustainable.

Proposals include limiting gross player payments, including all employment costs and benefits in kind, to £150,000 per club in National One, £100,000 in National Two and £50,000 in National Three. "Consequently it believes that there should be no payments for playing at Level 6 and below, with a guideline range for paying players between Levels 3 and 5,

Any club failing to adhere to the new regulations will lose RFU funding in relation to travel and will be disqualified from applying for RFU loans or grants for ground maintenance and facilities projects. Clubs will be required to declare payments to players at the end of each season signed by four club officials – treasurer, chairman, secretary and president. These will be strictly audited and any club found to have declared incorrectly will face unlimited sanctions ranging from points deductions to relegation or suspension from playing.

DATES NOTIFIED FOR YOUR DIARY

Sun 30 Oct	Bishop's Stortford Under 17A v Ruislip	1pm (?)
Sat 05 Nov	1st XV League Away v London Irish W.G. Bishop's Stortford Annual Fireworks Display	2.30pm 6.45pm
Sat 12 Nov	League Lunch Bishop's Stortford 1st XV v Henley	12.30pm 2.30pm
Sun 13 Nov	Colchester Colts v Bishop's Stortford Colts Round 3 National Cup	1.00pm (?)
Wed 16 Nov	Networking Evening for sponsors, advertisers And Business members. Guest speaker is Hugo Richardson of Weldon Beesley, Rural Land Agents and Chartered surveys	From 6pm

BISHOP'S STORTFORD RFC FUNCTION ROOM HIRE

With our modern clubhouse we have three quality rooms, which can be hired for a range of events including birthdays, anniversaries, christenings, wedding receptions, fitness classes, business meetings and presentations.

THE PRESIDENT'S BAR



Holds 40 people

THE STOKES ROOM



Holds 150 people

THE SCRUM BAR



Holds 200 people

**For further information including
function rates please contact:**

Sian Wilde. bsrfcbookings1@gmail.com or mobile 07484520278.

BISHOP'S STORTFORD RFC CLUB SHOP



TEAMWEAR, TRAININGWEAR AND LEISUREWEAR

Club Shop Opening Times:

Saturday: 12 noon - Kick off Time (1st XV Match days only)

Sunday: 9am - 1pm

For more information please see the club website:

www.bsrfc.co.uk or contact

Bob Winnington on: 07988 646 384





www.palmerandmartin.com

Unit 14 Twyford Business Centre
London Road
Bishop's Stortford
Herts
CM233YT
Tel: 01279 505072
Fax: 01279 508004



We pride ourselves in providing you with a one stop shop for your Self Drive Hire

Storage, haulage and Garage service requirements. Our extensive fleet has Cars, People Carriers, Small vans, Pannel vans, Luton vans, 7.5 tonne, 18 tonne, 32 tonne & 44 tonne trucks &

Trailers for self drive hire purposes. We can offer substantial discounts on long term and contract hires.

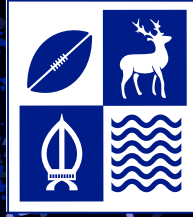
Our well equip workshop can service and maintain most makes of cars and HGV vehicles and we can offer a range of courtesy vehicles whilst your vehicle is in being repaired with us*.

Don't delay call us today on 01279 505072 one of our helpful staff will see to your requirements.

Proud Sponsors of The Bishop's Stortford Rugby Club .

The driving force behind "The Bishop's Stortford Rugby Club"





BISHOP'S STORTFORD RFC

FIREWORKS DISPLAY 2016

SKY'S ALIGHT 6.45PM

Saturday 5th November

See website for advance ticket sales

Advance Ticket Prices

Family Ticket (2 adults + 2 children (2-17yrs))	£15
Additional Child Ticket	£3
Additional Adult/ Unaccompanied Child Ticket	£5

Tickets bought on the night will cost more
No Re-admittance, No Sparklers



**ELMS
STANSTED**

Ellie's Fund

PRESIDENT'S CHARITY 2016/17

Bishop's Stortford Rugby Club exists to promote community participation in healthy recreation and we have in excess of 1600 members doing just that every week, with at least 50% actually playing the game.

When the Rugby World Cup came to town more than 500 of us, young and old took part in a continuous 8 hour touch rugby match. It was all kicked off by 4 teams of Wrinklies most of whom, were carrying some form of rugby or age related impediment but significantly they were all still able to take to the field supported by nothing more than a knee bandage!

It's all too easy to forget though, while we're busy enjoying ourselves here at the rugby club, indulging to a lesser or greater degree in 'healthy recreation', that there are those for whom this level of activity is an unachievable goal.

Ellie Darby is a local teenager who has a muscle wasting neuromuscular condition called Spinal Muscular Atrophy Type 2. She also has very fragile bones. Ellie used to be able to stand but not walk but as she grows the impact of her condition becomes greater, she now relies upon her powered wheelchair to support her to sit and move around.

Like any 16 year old Ellie craves her independence but is of course hugely reliant upon her parents and carers. There is however an accessory for her wheelchair that electronically rotates the seat meaning she could change her seating position on her own & it's something she would really love to own!

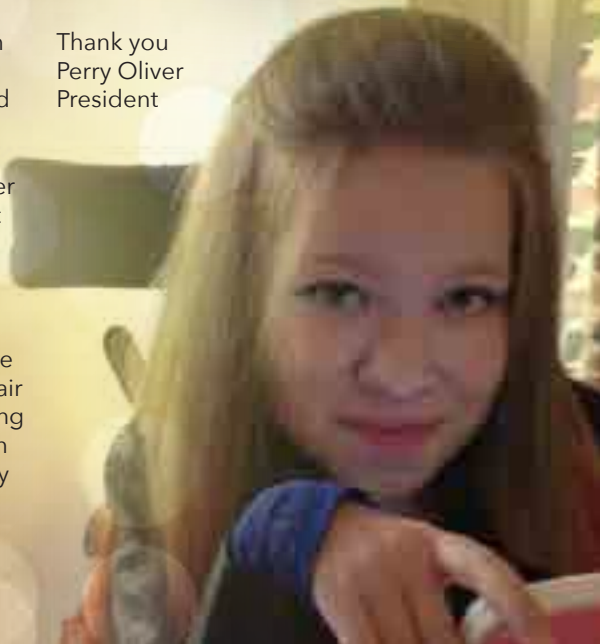
Everything we raise will be donated to Ellies Trust fund for the purchase of the correct equipment.

Ellie and her parents continue to receive an enormous amount of support from a National charity called The Annabelle Rose Foundation for Spinal Muscular Atrophy & they have requested that 10% of all monies donated to 'Ellies Fund' is directed to that cause.

The accessory costs in the region of £2000 & this is I believe a realistic target for us, collectively as One Club, to raise this season and in doing so having a positive impact on Ellie's life.

I promise it won't be every week but please give generously when asked and together, the members and supporters of Bishop's Stortford Rugby Club, can make a real difference to life of this fantastic young lady.

Thank you
Perry Oliver
President



BISHOP'S STORTFORD RFC MATCH DAY EXPERIENCE

Behind the scenes with the 1st XV



As part of the Clubs ethos 'to be a strong and successful rugby club united from senior to mini's, trusted and valued by our community' the BSRFC Director of Rugby, Andy Long and 1stXV Captain Tom Coleman, provide an insight for the "Mini & Junior" Members into what goes on behind the scenes as the 1stXV Players prepare for a National League 2 Match.

The day kicks off with a Q&A in the 1st XV Changing Room, followed by Training, Games & Warm Up Sessions with the Coaches and Players and also includes them providing the "Players Tunnel" alongside the "Blazer'd Brigade" to welcome both the opposition and the 1stXV onto the pitch before the game and culminates with Post Match Photos alongside the Players.

SPONSORED BY:



**RUSSELL
PROPERTY**

**SALES
CONSULTANCY
LETTINGS**



Why not join Bishop's Stortford Rugby Club?

As an Associate member:

- You receive notices and newsletters
- Will be entitled to a reduced entrance fee on 1st XV Match Days
- 10% Bar Discount
- Become a part of a thriving and vibrant community of like minded people

MEMBERSHIP

Associate Membership

Amount

£ 60.00

CONTACT DETAILS

Name:

D.O.B.:

Contact address :

Postcode:

Telephone :

Mobile :

Email :

Hand this form with your payment to a member of the bar staff or contact the Membership Secretary – contact information on the website.

**For Playing, Non Playing and Family Memberships
please check the website for details:**

www.pitchero.com/clubs/bishopsstortfordrfc/signup



CHARTERHOUSE

VOICE & DATA



*Proud Sponsors of The Colts 2016/17
& The National Rugby Awards, Club Sponsor of the Year!*

*Voice, data, mobile and document
management solutions.*

Charterhouse Voice & Data design, implement and manage communications solutions that help improve processes, enhance user experience and reduce cost. We're an independent, multi-award winning provider of voice, data, mobile, video, connectivity and managed documents solutions. *Go on, give us a try...*



The UK's Club Sponsor of the Year

www.cvd.plc.uk

Tel. 020 7324 7470



WESTBURY

WINDOWS & JOINERY

01245 326510
westburyjoinery.com